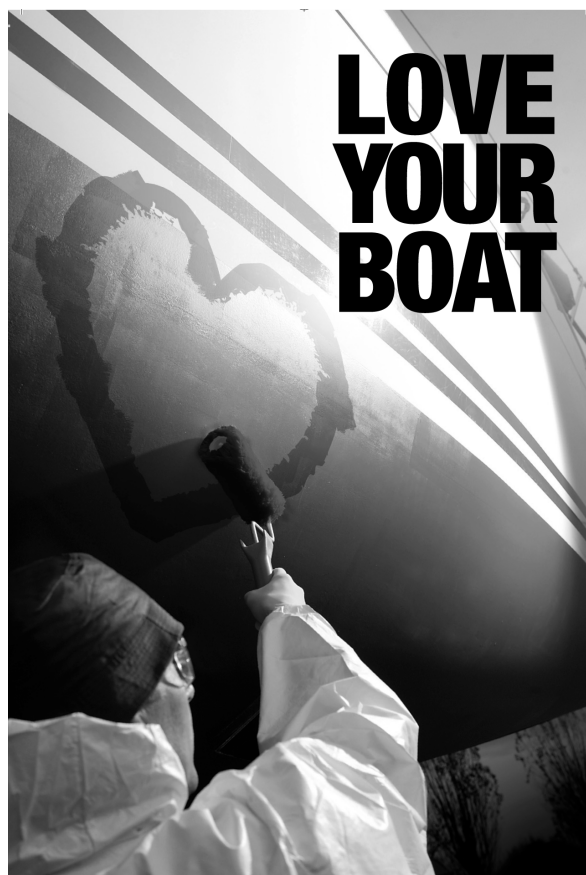


Seajet

Are supported by
CMP and a national
advertising campaign



If you adore faster passage times, more responsive handling and lower fuel costs, switch to Seajet anti-foul this season. Combining high performance with value for money, our easy to apply self-polishing technology ensures the controlled and careful release of biocide over time.

Show your boat
how much you care...
apply Seajet.♥



For details of your nearest stockist worldwide visit www.SEAJETPAINT.com or email askus@SEAJETPAINT.com
Distributed in the UK by Marine and Industrial LLP, Station Road, Worstead, Norwich, NR28 9SB
T 01692 406 822 email sales@marineindustrial.co.uk



033 Shogun contains Copper Oxide. 034 Emperor contains Copper Thiocyanate & Zinc Pyrithione. 039 Platinum contains Copper Oxide & Zinc Pyrithione. Use pesticides safely. Always read the label.

Antifouling Seajet

039 Platinum Antifouling

An ultra high performance antifoul designed for the super yacht market. This product works just like and as well as TBT did, but conforms to IMO regulations for worldwide use. Seajet 039 works using the latest SPC technology and is designed for use on all substrates except aluminium. Also ideal for blue water cruising and vessels with prolonged periods between haul outs.



Seajet 039 Platinum Antifouling

4 Litres	Black	SJ/670FR0013/2
4 Litres	Mid Blue	SJ/670FR6943/2
4 Litres	Navy	SJ/670FR6094/2
4 Litres	Red	SJ/670FR2810/2

NB Two part antifoul !

Seajet 034 Emperor Self-Polishing Antifouling

750ml	Black	SJ/634VR0013/1
2.5 Litres	Black	SJ/634VR0013/2
750ml	White	SJ/634VR0020/1
2.5 Litres	White	SJ/634VR0020/2
750ml	Red	SJ/634VR2110/1
2.5 Litres	Red	SJ/634VR2110/2
750ml	Mid Blue	SJ/634VR6943/1
2.5 Litres	Mid Blue	SJ/634VR6943/2
750ml	Navy	SJ/634VR6094/1
2.5 Litres	Navy	SJ/634VR6094/2

Coverage 8.4m²/litre

Suitable for freshwater



034 Emperor

Self-Polishing Antifouling

A high performance antifoul designed for the European yachting and powerboat market. This product can be used up to a maximum speed of 40 knots. Suitable for all substrates including; steel, aluminium, ferro and wood. Anti-slime formulation makes this product ideal for high fouling waters.

Bright White, Mid Blue, Navy Blue, Bright Red, Black.

Seajet 033 Shogun Self-Polishing Antifouling

750ml	Black	SJ/695VR0031/1
2.5 Litres	Black	SJ/695VR0013/2
750ml	Shark Grey	SJ/695VR0295/1
2.5 Litres	Shark Grey	SJ/695VR0295/2
750ml	Red	SJ/695VR2110/1
2.5 Litres	Red	SJ/695VR2110/2
750ml	Mid Blue	SJ/695VR6943/1
2.5 Litres	Mid Blue	SJ/695VR6943/2
750ml	Navy	SJ/695VR6094/1
2.5 Litres	Navy	SJ/695VR6094/2

Coverage 8.8m²/litre



033 Shogun

Self-Polishing Antifouling

Ideal for glassfibre, ferro and wood, even up to speeds of 40 knots. Proven in UK and Northern European waters.

Shark Grey, Mid Blue, Navy Blue, Red and Black

Seajet 037 Coastal

2.5 Litres	Black	SJ/690CR0013/2
2.5 Litres	Red	SJ/690CR2991/2
2.5 Litres	Mid Blue	SJ/690CR6941/2

Coverage 9.4m²/litre

Ideal for inland and coastal waters



Seajet

037 Coastal

A good performance and economic hard conventional antifouling. Suitable for coastal and inland waters including drying mud berths. For speeds up to 70 knots.

Black, red and mid blue.

Seajet 036 Shogun Eco

2.5 Litres	Black	SJ/208VR0013/2.5
2.5 Litres	Red	SJ/208VR2110/2.5
2.5 Litres	Navy	SJ/208VR6094/2.5
2.5 Litres	Blue	SJ/208VR6943/2.5
2.5 Litres	Clear	SJ/208VR0061/2.5
2.5 Litres	White	SJ/208VR0020/2.5

**NOW IN
COLOURS
NO BINDER
NEEDED**



Biocide Free Antifoulings

036 Shogun Eco

A new product for 2006 that is completely Biocide free, making it ideal for use on inland waterways where Biocides can effect the wildlife balance.

2-3 coats of 036 Eco are applied, which will slowly break down, releasing any light foul which might attach to the surface.

This is a one season, not annual application!



Seajet Peller Clean

Pack SJ/215FR00000

Remember this is a foul release system and weed will only come off when you use the boat.

Coverage Each pack contains enough for 1 outboard/drive. Includes; brushes, gloves and mixing pots.



Seajet 034 Emperor Self-Polishing Antifouling

750ml	Black	SJ/634VR0013/1
750ml	White	SJ/634VR0020/1
750ml	Red	SJ/634VR2110/1
750ml	Mid Blue	SJ/634VR6943/1
750ml	Navy	SJ/634VR6094/1

NB. When preparing propellers, propeller primer must be applied prior to 034 Emperor.



Seajet 011 Underwater Primer

750ml	Silver	SJ/251CR0043/1
2.5 Litres	Silver	SJ/251CR0043/2

Coverage 7.2m²/litre



Seajet Universal Primer/Undercoat

750ml	Off White	SJ/250AM0020/1
2.5 Litres	Off White	SJ/250AM0020/2

Coverage 11.2m²/litre



Seajet Propeller Primer

0.25 Litres SJ/236EE0313

NB. 034 Emperor is the only suitable antifoul to apply on metal surfaces.

Seajet Propellers, Out drives, Outboard legs...

Peller Clean

An advanced and environmentally friendly foul release coating for propellers, drive and stern gear, trim tabs etc.

034 Emperor Self-Polishing Antifouling

Suitable for both hull and metalwork of your vessel, making antifouling much easier, as masking the drive gear is not required. The ant-slime formulation makes this product ideal for use in high fouling areas. Any light slime which does build up will be dispersed as soon as the boat is used.

Seajet

Primers

011 Underwater Primer

For below the waterline use only. Recommended as a binder coat for old antifouling or as an antifoul primer.

This is a quick drying product with excellent adhesion to existing antifoul and subsequent coats.

Universal Primer/Undercoat

A General purpose, single pack, primer and undercoat for above water areas. Quick drying with excellent adhesion to all surfaces and subsequent coats.

Alkyd based product with a minimum application of 5°C.

Propeller Primer

For bare aluminium, bronze, stainless and any alloy surfaces after abrading and degreasing. Packed in a small 250ml tin and ideal for priming the small areas of a boat prior to antifouling.

Seajet 017 Epoxy Binding Primer

1 Litre	White	SJ/203EE0020/1
2.5 Litres	White	SJ/203EE0020/2

This is a two pack product

Coverage15m²/litre



Seajet

Primers

017 Epoxy Binding Primer

For bare aluminium, bronze and any alloy surfaces after abrading and degreasing. Gives superior performance compared to an etch primer. Is suitable for above and below the waterline. Ideal for first coat on lead keels.

Seajet 117 Two Pack Multipurpose Epoxy Primer

1 litre	Silver	SJ/249EE0273/1
2.5 Litres	Silver	SJ/249EE0273/2
1 litre	Red	SJ/249EE0608/1
2.5 Litres	Red	SJ/249EE0608/2
1 litre	White	SJ/249EE0020/1
2.5 Litres	White	SJ/249EE0020/2

3 to 4 coats for osmosis prevention

Film thickness

Wet; 152-313 microns

Dry; 75-150 microns

Coverage 8.6m²/litre

White 117 ABOVE waterline use only.



117 Two Pack

Multipurpose Epoxy Primer

A high performance two component epoxy for use on all areas. Ideal for use on metal keels and osmosis prevention. Multi purpose high performance primer for antifoul and two component top coats. Long term durability for steel, GRP and aluminium. Available in two colours for easy overcoating.

Seajet 118 Ultra Build Epoxy Primer

1 litre	Silver Bronze	SJ/460JE0043/1
2.5 Litres	Silver Bronze	SJ/460JE0043//2

3 to 4 coats for osmosis prevention

Film thickness

Wet; 110-337 microns

Dry; 100-300 microns

Coverage 10.7m²/litre



118 Ultra Build

Epoxy Primer (osmosis prevention)

Ultra Build High Solids Epoxy Primer and osmosis prevention system. For use above and below the waterline. Ideal for metal surfaces where surface preparation is not ideal. High build allows fast build up of film thickness. Tough and durable giving superior protection for keels over that offered by 117.

Seajet UV Varnish

Gloss

750ml Clear SJ/562AM0061

Satin

750ml Clear SJ/562XX0061

Coverage 14m²/litre



Seajet

Varnishes & Coatings

UV Varnish

Gloss an ideal gloss varnish for all areas.

Contains UV absorbers which give a long lasting, durable, high performance varnish.

This traditional tung oil varnish is easy to apply to give a high gloss finish.

Satin an ideal satin varnish designed mainly for internal marine applications.

This product gives good coverage and a nice even finish to any wood surface.

Gives a long lasting, durable high performance satin varnish.

First coat must be UV gloss

Seajet Teak Oil

750ml Clear SJ/965MZ0061

Coverage 20m²/litre



Teak Oil

An ideal product for the natural protection of wood in all areas.

Lower maintenance than varnish. Can be re-applied quickly and easily if required.

This product must be applied directly to bare wood.

Gives wood a protection against UV and the elements.

Seajet Two Pack Polyurethane Varnish

75ml SJ/563XX0061

Coverage 14m²/litre

Give a long lasting, durable, high performance clear finish.



Two Pack

Polyurethane Varnish

An ideal two pack polyurethane varnish designed for clear coating of marine applications.

This product gives good coverage and a nice even finish to any wood/epoxy surface. It's UV protection capability makes it suitable for use on epoxy surfaces.

Paints & Coatings

Seajet

Varnishes & Coatings

Glosskeep Topcoat

Easy to use single pack, high performance marine topcoat. Colour and gloss are retained for three to four times longer than conventional topcoats. (silicone alkyd high gloss topcoat).



Seajet Glosskeep Topcoat

750ml	White	SJ/568AM0020/1
2.5 Litres	White	SJ/568AM0020/2
750ml	Signal Red	SJ/568AM2093/1
750ml	Mid Blue	SJ/568AM6151/1
750ml	Navy Blue	SJ/568AM6152/1
750ml	Cream	SJ/568AM0537/1
750ml	B R Green	SJ/568AM5163/1

Coverage 12.1m²/litre

Seajet 132 Polyurethane Topcoat

750ml	White	SJ/569XX0020/1
750ml	Signal Red	SJ/569XX2093/1
750ml	Mid Blue	SJ/569XX6151/1
750ml	Navy Blue	SJ/569XX6152/1
750ml	Black	SJ/569XX0013/1

Coverage 15m²/litre

Can be used as a deck coating with the addition of an anti-slip grit.



132 Two Pack

Polyurethane Topcoat

This tough new two pack gloss paint gives long term gloss and colour retention. It is easy to apply and can be used to overcoat existing two pack products.

This product, once cured, gives a tough and durable finish that is not only aesthetically pleasing, but long lasting.

Can be used as a deck coating with the addition of an anti-slip grit product.

Full range of colours available.

Seajet Deck Paint

750ml	Grey	SJ/435XX0277/1
750ml	White	SJ/435XX0020/1
750ml	Cream	SJ/435XX0537/1

Designed for application by brush/roller or HVLP



Deck Paint

This single pack semi-gloss deck paint has grit mixed in for increased anti-slip properties. Gives a matt finish to stop sunlight reflection from the deck

Seajet Varnishes & Coatings Thinners

A range of thinners for a variety of applications.

Seajet Thinners

1 litre	'A' for use with antifouling, Speed & Seajet 011 primer	SJ/908TR0061/1
1 litre	'U' for use with Glosskeep, Universal primer & UV varnish	SJ/907TM0061/1
1 litre	'E' for use with all epoxy primers	SJ/901TE0061/1
1 litre	'P' for use with Seajet 132 polyurethanes	SJ/908TR0061/1



Seajet Lightweight Fairing Filler Epoxy

600gm	Brown	SJ/975MZ0061
-------	-------	--------------

Lightweight Fairing Filler Epoxy

This amazingly fast same day filling and painting epoxy based filler is suitable for use above and below the waterline. It is sandable and ready for painting in about 30 minutes. (@20°C). It does not shrink and has a maximum application thickness of 6mm. Ideal for repairs to gelcoat blisters, damage and cracks.

Seajet Boatwash

1 litre	Clear	SJ/920MZ0061/1
---------	-------	----------------

Not suitable for frequent usage.



Boat Care Boatwash

Award winning cleaner to bring back the shine to your boat. Powerful cleaning and revitalising to GRP, plastics and paint work. Removes yellowing and can be used as a degreaser. *Not suitable for frequent usage.*

CMP

Varnishes & Coatings

Umeguard

This product is a very high surface tolerant epoxy and is also designed to be used where slurry blasting is required. This leaves a gingered rust finish, which when dry can be overcoated with further preparations of this product. It is also very useful for patching hand prepared steelwork.

Coatings for the insides of drinking water tanks (potable water)

Cleankeep 5000 Solvent Free

High Build solvent free epoxy coating that is Water Potable approved and ideal for water tanks.

Jotun

Supertropic Commercial

Jotun's entry level antifoul that is copperbased and suitable for coastal use. This product is ideal for small harbour and fishing craft.

Seaguardian Antifoul

Seaguardian is Jotun's high strength commercial coastal antifoul. It is ideal for vessels which are going to spend a prolonged time in the water, or those which are in high foul areas.

Ravilakk

Quick drying, durable, high gloss UVR varnish with tung oil. High elasticity. Gives golden, glowing finish for all woods.

CMP Umeguard

5 Litres	Grey	SJ/UG/SX/GY/5
5 Litres	Red	SJ/UG/SX/RD/5
20 Litres	Grey	SJ/UG/SX/GY/20
20 Litres	Red	SJ/UG/SX/RD/20

SX = Standard

MT = Moisture tolerant epoxy

HS = High solids surface tolerant epoxy

To order MT or HS, replace the SX portion of the code above relevant to colour and size required.

CMP Cleankeep 5000 Solvent Free

5 Litres	SJ/CKEEP/5
----------	------------

Jotun Supertropic Commercial

5 Litres	Red	JN/ST/5R
2.5 Litres	Red	JN/ST/2.5R
2.5 Litres	Blue	JN/ST/2.5B

Jotun Seaguardian Antifoul

5 Litres	Light red	JN/SG/LR/5
5 Litres	Red	JN/SG/5R
20 Litres	Red	JN/SG/DKRED/20
5 Litres	Black	JN/SG/BLK/5
5 Litres	Dark blue	JN/SG/5B

Jotun Ravilakk

1 Litre	Glossy Clear	JN/RL/1
---------	--------------	---------

Typical properties

Coverage: 14m²/Litre

Film thickness: Wet 70 microns Dry 35 microns

Drying Times*: Touch dry 1 hour

Dry to re-coat 24 hours

Applications: Brush, Roller, Conventional and airless spray.

Thinners: No.2

**Depends on temperature*

Burgess Varnishes & Coatings

Burgess Woodsealer

1 Litre	BS/WS/1
2.5 Litres	BS/WS/2.5
5 Litres	BS/WS/5

Woodsealer

A blend of co-polymer synthetic resins and UV blocking pigments, designed to penetrate and bind fibres of wood and other absorbent materials to prevent further weathering. Easy and safe to use, even on damp wood. Spills and brushes can be cleaned with water.

Burgess Topgloss

1 Litre	BS/TG/1
2.5 Litres	BS/TG/2.5
5 Litres	BS/TG/5

Topgloss

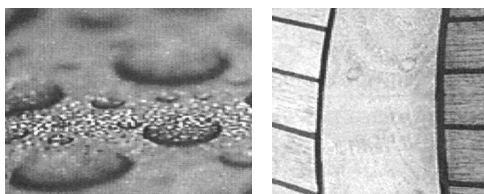
A crystal clear acrylic varnish, using similar but harder resins to *Woodsealer*. However *Topgloss* does not contain UV blocking pigments and is recommended over a priming coat of *Woodsealer* where a high gloss finish is required.

Burgess Clear Seal

1 Litre	BS/CS/1
2.5 Litres	BS/CS/2.5

Clear Seal

A clear synthetic resin from Burgess which penetrates deep into wood, sealing it against moisture, dirt and stains etc. Clear seal is compatible with all other Burgess products and can even be applied to damp or unseasoned wood. Being microporous it will allow wood to dry out naturally, minimising cracks, shakes and warping. Also effective for sealing masonry. Spills and brushes can be cleaned with water before drying. Burgess Clear Seal replaces Hydroclear.



Burgess Cracksealer

100ml	Bcracks/100
-------	-------------

Cracksealer

A penetrating liquid 'hydroseal' resin which is carried by the presence of moisture into the smallest hairline cracks and crevices, providing an excellent barrier of protection.

Paints & Coatings

Owatrol Deks Olje No.1

1 Litre	GN/DN1/1
2.5 Litres	GN/DN1/2.5
20 Litres	GN/DN1/20



Owatrol Deks Olje No.2

1 Litre	GN/DN2/1
2.5 Litres	GN/DN2/2.5
20 Litres	GN/DN2/20



Owatrol Net Trol

1 Litre	GN/NET/1
2.5 Litres	GN/NET/2.5
5 Litres	GN/NET/5



ICI Bilgex Bilge Cleaner

1 Litre	ICI/BILGEX/1
5 Litres	ICI/BILGEX/5



Owatrol

Varnishes & Coatings

Deks Olje No.1

For years of beautiful boating with minimum maintenance. A highly penetrating oil that saturates, seals and stabilises wood, preventing decay, cracking and deterioration. Deks Olje No.1 may be applied to any kind of wood, new or old, exterior or interior; above or below the waterline. Deks Olje No.1 can be applied on its own, leaving a rich matt finish with withstands sunlight, salt and water. Easily maintained with soap and water. No stripping required on retreating, just apply more Deks Olje No.1.

Deks Olje No.2

Is applied over Deks Olje No.1 where a beautiful gloss finish is required. Unlike varnish, this gloss finish is highly flexible and will not crack or blister. When Deks Olje No.1 is overcoated with Deks Olje No.2, simply maintain the finish with two or more coats, every one or two years. Deks Olje offers a natural protective finish, without the constant maintenance that is associated with conventional wood varnish.

Net Trol

The one part cleaner and brightener, which is safe, quick and easy to use. Net Trol will effectively remove unsightly weathering, not bleaching the wood, but returning it to its original colour. Net Trol is equally suitable for cleaning fibreglass and will remove those rust stains that so often occur beneath the waterline.

Bilgex Bilge Cleaner

This well known original bilge cleaner is an excellent way to clean all types of muck and grime, including oil from bilges. It is available in one and five litre containers.

Can be left in bilge so if and when oil enters it's dispersed straight away. Excellent value for money.

Owatrol Polytol

250ml	GN/POLY/250ML
500ml	GN/POLY/500ML
1 Litre	GN/POLY/1L



Owatrol Paint Conditioner

500ml	GN/OWAT/500ML
1 Litre	GN/OWAT/1L

Owatrol Paint Conditioner - unlike thinners, once put in paint, stays in.



Dilunett Gel

750ml	GN/DIL/750
2.5 Litres	GN/DIL/2.5

Dilunett is solvent free and non-flammable and can easily be used in a confined space. It is water washable and does not contain paraffin or other oily substances, so can be cleaned off with water.

Caution - Care should be taken when using this product and directions should be read carefully.

WARNING - CAUSTIC

Can cause serious burns to skin

Owatrol

Varnishes & Coatings

Polytol

A versatile product that should be kept in every paint locker. Polytol can be used on most surfaces including; fibreglass, wood and metal. It brings faded fibreglass hulls up like new; restores and protects aluminium, chrome and corroded brass or bronze.

Polytol will keep your boat clean and bright, giving a fresh sparkle to most surfaces.

Paint Conditioner

Applying oil based paints, stains and varnishes can be hard work, especially when the weather is against you. If it is warm and windy, the paint becomes sticky and leaves lap marks; if it is cold, the paint becomes stiff and hard to work with. The surface being coated can also give you problems. If it is dry and porous the finished coating later becomes brittle, will then crack and peel with all your careful work wasted.

These problems can be overcome by using Owatrol Paint Conditioner and rust inhibitor. Owatrol is a stable, durable paint-oil with the same solids content as paint. These compensate for the adverse effects that the weather and surface conditions have on paint

Dilunett Gel

Safe to use on Gelcoat

This product has a unique stripping action, different in application and performance from other paint removers. Will remove most paints, varnishes and lacquers; particularly effective on oil-based coatings. It will also remove water-based paints i.e. vinyls and emulsions.

WILL NOT remove epoxy, urethane or cellulose paints.

Easily applied using a paint brush with synthetic bristles or a spatula. Dilunett removes eight to ten layers of paint in just one application. Working slowly at first, it dissolves paint in the smallest recesses and finest details. It's deep action softening all accumulated layers for easy, clean removal.

M & I Marine Gloss Two Pack PU

1 Litre MF/PU100

Please note that this product can be applied using airless spray if required.

Standard colour chart on request



Marine & Industrial

Marine Gloss Two Pack PU

Here at Marine and Industrial we understand that not everyone has the facilities available to spray two pack paints. With this in mind we have been working very closely with one of our manufacturers to produce, what we believe, is one of the best brushable two pack paints and varnishes available on the market.

Any colour can be available with a minimum order of 12 litres and one weeks lead time.

M & I Marine Deck Paint

1 Litre Light Grey MF/DP
White
Pastel Grey

1 litre quantities are stock items but larger sizes can be ordered if required.



Marine Deck Paint

High quality marine deck paint with non-slip additive to give a finish with more grip.

M & I Marine Bilge Paint

1 Litre Red, Grey MF/BP
White

1 litre quantities are stock items but larger sizes can be ordered if required.



Marine Bilge Paint

Specifically designed for use within the bilge and lockers, this paint can be applied straight onto wood or GRP without the use of primer.

M & I Black Tar Varnish

5 Litres MI/BTV/5

Typical properties

Flashpoint: ACC >33°C

Drying time: @ 23°C 4 hours max.

Typical spread rate: 10/14m²/kg

Ideal for narrow boats



Black Tar Varnish

A low cost black tar paint conforming to BS1070 1973 Type B. Does not contain fillers and is suitable for cold application by brush. It is made from a high temperature coke oven, coal tar base and coal tar derived solvent, which avoids incompatibility problems.

Black Tar Varnish is intended for use as a protective, rather than decorative, finish. It protects the surface by the exclusion of moisture or other corrosive agents. As well as providing a waterproof film it has antibacterial properties. The paint is supplied with a consistency suitable for brush application, providing a durable and tenacious coating.

M & I Bitumous Paint

5 Litres MI/BP/5

Typical properties

Flashpoint: ACC >32°C

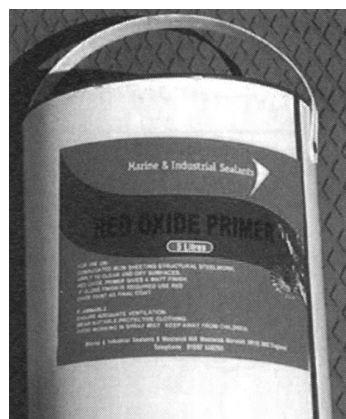
Thinners: White Spirit.

Typical spread rate: 600mg/m²

M & I Red Oxide Primer

5 Litres MI/RDP/5

Please check with our technical department on the compatibility of this product with the paint system you are intending to use.



Marine & Industrial

Bitumous Paint

A single part protective coating that's ideal for all metals and woods.

Red Oxide Primer

Marine and Industrial Red Oxide Primer is a high opacity general purpose red oxide primer. Suitable for metallic or old cementitious surfaces. Ideal when the economy of a one coat application is required. May, if required be overpainted by conventional undercoats and/or gloss paints.

M & I Coppershield 2000

Total pack

1.2 Litre MI/COPBOT/3

0.5kg Resin

0.5kg Hardener

2kg Pure copper powder

Coverage 10-12m² per pack

When the three components are thoroughly mixed together and the filled epoxy is fully cured, the hard, smooth, durable coating provides excellent long term resistance to marine growth.

Contact us for further details.



Coppershield 2000

This copper rich, water miscible epoxy system is for use on the underwater section of GRP, wooden, ferro-cement, aluminium and steel boats.

Instructions for use see hints and tips



Upol Smooth 7 Body Filler

5 Litres UPOL/SM/7

Features

- Polyester bodyfiller that provides deep filling properties and easy sanding. It is a truly universal bodyfiller for the bodyshop.

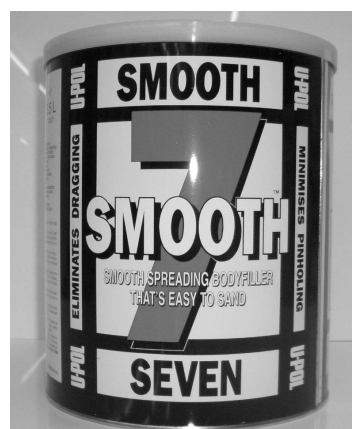
Benefits

- Smooth application characteristics.
- Excellent deep filling properties.
- Easy sanding.
- Fine finishing.
- High adhesion to a wide range of substrates including; steel, galvanised/zinc coated steel, aluminium and GRP.

Upol Hardeners

White UPOL/HARD/WHT

Red UPOL/HARDENER



Upol

Smooth 7 Body Filler

Incorporates much easier sanding back qualities than either P38 or EASY 1. If you don't believe us call and give it a try.

Extra hardeners are available separately for this product in white and red.

This product has been purchased at a special rate, so please call us now for hugely competitive rates.

Jotun

Clipper 1

Protective saturating oil for wooden boats above and below the waterline. Excellent penetration and protects against fungus. Used as a primer for other varnishes and paints.

Hammerite

Protects and rejuvenates metal with a special formulation to form a tough barrier that sheds moisture to provide long lasting protection.

Has high gloss and colour retention and can be applied directly to rusty metal with no primer or undercoat.

Is quick drying with touch dry in 60 minutes and rain proof in 90 minutes.

Jotun Clipper 1

1 Litre Colourless JN/C1/1

Typical properties

Film thickness: Wet 70 microns Dry 35 microns

Drying Times*: Touch dry 2 hours

Dry to re-coat min 24 hours

Fully Dry dependent on wood type

Applications: Brush, multiple coats wet on wet.

Thinners: No.2

*Depends on temperature

Hammerite

Smooth

250ml	Black	HE/6722001
400ml Aerosol	Black	HE/6722013
250ml	Dk Blue	HE/6701077
400ml Aerosol	Dk Blue	HE/6701105
250ml	Green	HE/6722301
400ml Aerosol	Green	HE/6722313
250ml	Red	HE/6722101
400ml Aerosol	Red	HE/6722015
250ml	White	HE/6720201
400ml Aerosol	White	HE/6720205

Hammered

250ml	Black	HE/6720101
250ml	Dk Blue	HE/6720701
250ml	Grey	HE/6721801
250ml	Lt Blue	HE/6720601
250ml	Mid Green	HE/6720901

Thinners & Brush Cleaner

250ml		HE/6721501
-------	--	------------



An extensive range of colours and sizes available on request

Wire brush to remove loose paint, rust and millscale. Ensure surfaces are dry and free from dirt, dust and grease before application.

